

CV45 Mechanical Control Valve

The CV45, now available with patent pending **Gator Technology**, is a low pressure, full port, mechanical dump valve. It features balanced plug control trim with a quick opening characteristic. The CV45's full port allows for high flow rates, and its soft seat design gives a consistent leak free shut off.

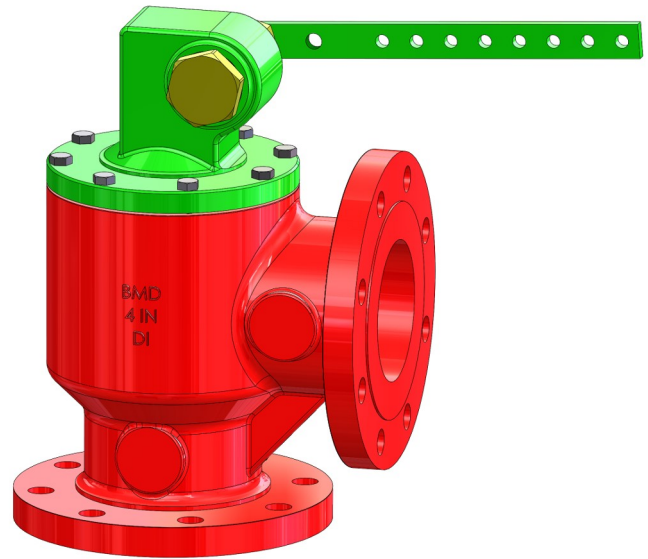
The CV45 can be used for discharging liquid or gas from separators, treaters, knockouts or other vessels making it a great economical choice for a variety of low-pressure applications.

The Gator, sold exclusively through BMD, is a patent pending spline mechanism that replaces existing "D" or keyed rotational connections that quickly wear out. The spline design eliminates slippage/slack, providing greater accuracy and precision.

Multiple Gator parts and accessories are available to fit a wide variety of configurations.

Specifications

- Sizes: 2", 3" and 4"
- Connections: Female NPT, Flanged
- Body Type: Globe, Angle
- Trim Characteristic: Quick Open
- Trim Size: Full Port
- Trim Type: Balanced
- Pressure Rating:
 500 psi - 2" NPT
 250 psi - 2" Flanged
 250 psi - 3" & 4" Flanged & NPT
- Temperature Range: -20° F to 400° F
- Materials:
 Body and Bonnet: Ductile Iron
 Plug: 304 SST
 Seat: SST
 Stem: 304 SST
 Shaft: Gator Spline, 304 SST
 Bolting: A193 B7



The Gator Method

Gator utilizes spline teeth to increase contact area on the CV45 and level control rotational connections. The spline teeth eliminate all slippage/slack in the system and maintain the correct angles for perfect timing and proper closure/



Traditional Method

Conventional trunnion and dump valve assemblies typically utilize D-shaped, cotter pin or keyed rotational connections to transmit torque. Accuracy is a major problem with these designs due to rotational slack/slippage created by normal wear, causing incorrect timing and incomplete closure/opening of the dump valve.



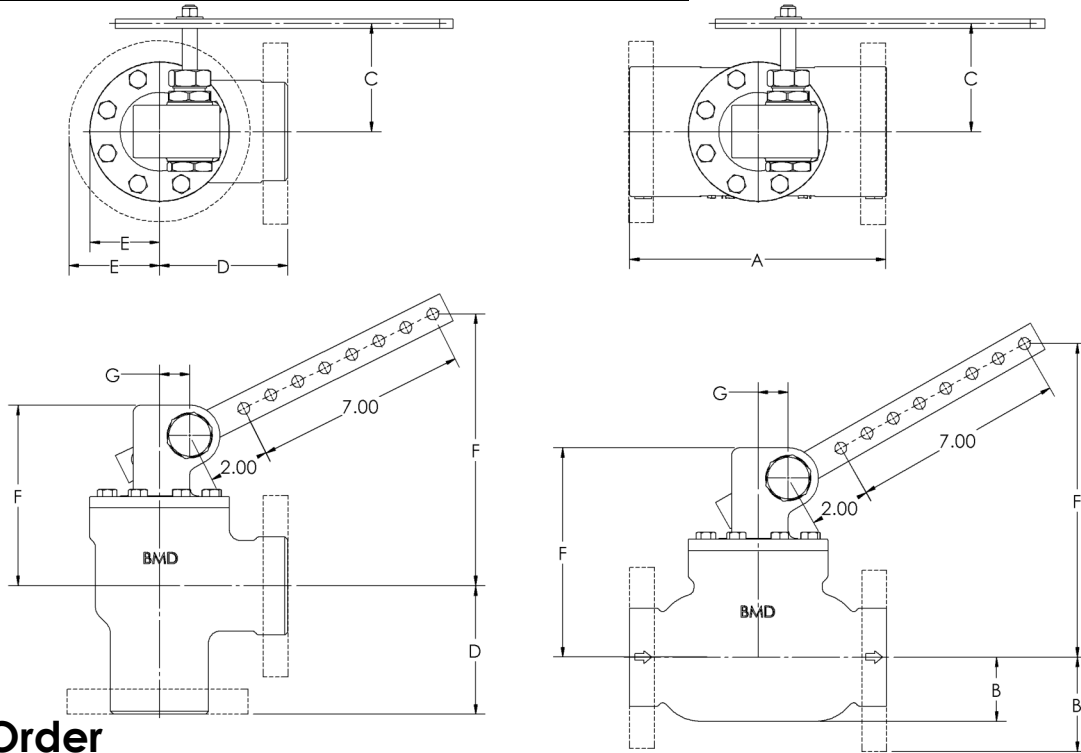
Size	Cv					
	2" (.623 Lift)		3" (.664 Lift)		4" (.78 Lift)	
Body	Globe	Angle	Globe	Angle	Globe	Angle
Full Port	53.2	62.4	112.8	123	182	179.4

Dimensions & Weights

		Valve Dimensions									
Body Size	End Connection	Globe					Angle				
		A	B	C	F	G	C	D	E	F	G
2"	NPT	8.50	2.13	3.57	10.38	1.00	3.57	4.25	2.31	10.38	1.00
	150 RFF	9.00	3.06	3.57	10.38	1.00	3.57	4.25	3.06	10.38	1.00
3"	NPT	12.00	3.00	3.60	11.74	1.39	3.60	5.50	3.00	11.74	1.39
	150 RFF	12.19	3.88	3.60	11.74	1.39	3.60	5.50	3.88	11.74	1.39
4"	NPT	15.00	3.75	3.78	15.48	1.39	3.78	6.50	3.56	15.48	1.39
	150 RFF	15.13	4.50	3.78	15.48	1.39	3.78	6.50	4.50	15.48	1.39

		Valve Weights											
End Connection		2"		3"				4"					
		Globe		Angle		Globe		Angle		Globe		Angle	
		lbs	kg	lbs	kg	lbs	kg	lbs	kg	lbs	kg		
NPT		28	13	22	10	60	27	46	21	100	45	77	35
150 RFF		36	16	31	14	75	34	60	27	114	52	90	41

F = Dimension with valve in closed position.



How to Order

Example Model No. CV45-2NGR-VR

CV45 Series Mechanical Dump Valve, 2" Globe Body, Threaded Ends, Teflon Seat, Full Port, 12" Lever.

Body Size	2 - 2"	3 - 3"	4 - 4"
Connection	N - NPT	F - RFF	
Body Type	G - Globe Body	A - Angle Body	
Seat Material	T - Teflon		
Trim Size	F - Full Port		
Gator Lever Length	12 - 12" (Standard)	18 - 18"	24 - 24" 36 - 36"

CV45 - 2 N G T F - 12

Beaumont Manufacturing

 and Distribution Company
www.beaumontmanufacturing.com

Phone: 409-225-5863
 Fax: 409-242-1005
 850 Fannin
 Beaumont, Texas 77701